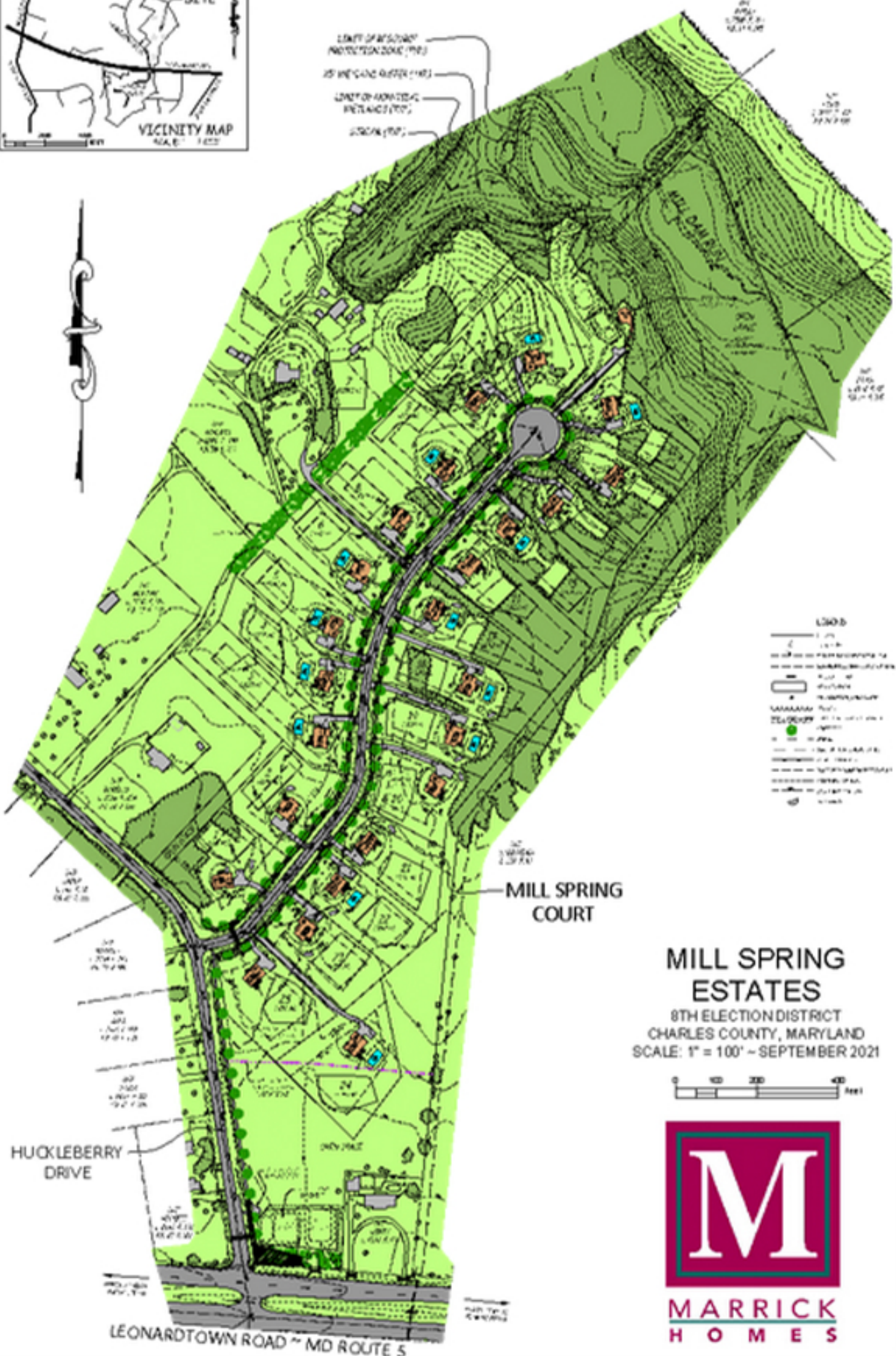




LIMIT OF PROPOSED  
 PROTECTION ZONE (198)  
 25' SETBACK BUFFER (198)  
 LIMIT OF ADJACENT  
 PROTECTIVE ZONE (198)  
 DRAIN (198)



LEGEND

—	1" = 100'
—	2" = 100'
—	3" = 100'
—	4" = 100'
—	5" = 100'
—	6" = 100'
—	7" = 100'
—	8" = 100'
—	9" = 100'
—	10" = 100'
—	11" = 100'
—	12" = 100'
—	13" = 100'
—	14" = 100'
—	15" = 100'
—	16" = 100'
—	17" = 100'
—	18" = 100'
—	19" = 100'
—	20" = 100'
—	21" = 100'
—	22" = 100'
—	23" = 100'
—	24" = 100'
—	25" = 100'
—	26" = 100'
—	27" = 100'
—	28" = 100'
—	29" = 100'
—	30" = 100'
—	31" = 100'
—	32" = 100'
—	33" = 100'
—	34" = 100'
—	35" = 100'
—	36" = 100'
—	37" = 100'
—	38" = 100'
—	39" = 100'
—	40" = 100'
—	41" = 100'
—	42" = 100'
—	43" = 100'
—	44" = 100'
—	45" = 100'
—	46" = 100'
—	47" = 100'
—	48" = 100'
—	49" = 100'
—	50" = 100'
—	51" = 100'
—	52" = 100'
—	53" = 100'
—	54" = 100'
—	55" = 100'
—	56" = 100'
—	57" = 100'
—	58" = 100'
—	59" = 100'
—	60" = 100'
—	61" = 100'
—	62" = 100'
—	63" = 100'
—	64" = 100'
—	65" = 100'
—	66" = 100'
—	67" = 100'
—	68" = 100'
—	69" = 100'
—	70" = 100'
—	71" = 100'
—	72" = 100'
—	73" = 100'
—	74" = 100'
—	75" = 100'
—	76" = 100'
—	77" = 100'
—	78" = 100'
—	79" = 100'
—	80" = 100'
—	81" = 100'
—	82" = 100'
—	83" = 100'
—	84" = 100'
—	85" = 100'
—	86" = 100'
—	87" = 100'
—	88" = 100'
—	89" = 100'
—	90" = 100'
—	91" = 100'
—	92" = 100'
—	93" = 100'
—	94" = 100'
—	95" = 100'
—	96" = 100'
—	97" = 100'
—	98" = 100'
—	99" = 100'
—	100" = 100'

**MILL SPRING ESTATES**  
 8TH ELECTION DISTRICT  
 CHARLES COUNTY, MARYLAND  
 SCALE: 1" = 100' - SEPTEMBER 2021

